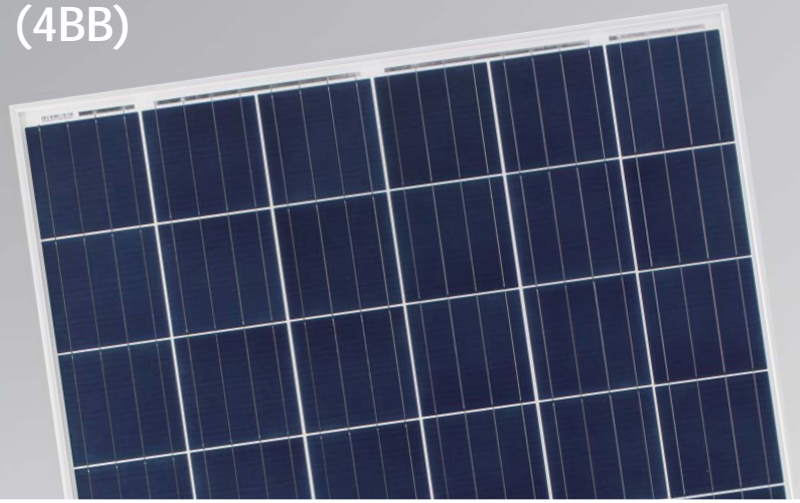


JKM270P-60 255-270 Watt POLY CRYSTALLINE MODULE

Positive power tolerance of 0/+3%

ISO9001:2008, ISO14001:2004, OHSAS18001
certified factory.
IEC61215, IEC61730 certified products.

(4BB)



KEY FEATURES



4 Busbar Solar Cell:

4 busbar solar cell adopts new technology to improve the efficiency of modules, offers a better aesthetic appearance, making it perfect for rooftop installation.



High Efficiency:

High module conversion efficiency (up to 16.50%), through innovative manufacturing technology.



Low-light Performance:

Advanced glass and solar cell surface texturing allow for excellent performance in low-light environments.



Severe Weather Resilience:

Certified to withstand: wind load (2400 Pascal) and snow load (5400 Pascal).

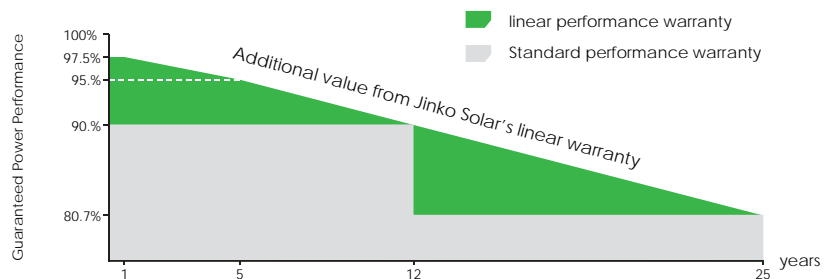


Durability against extreme environmental conditions:

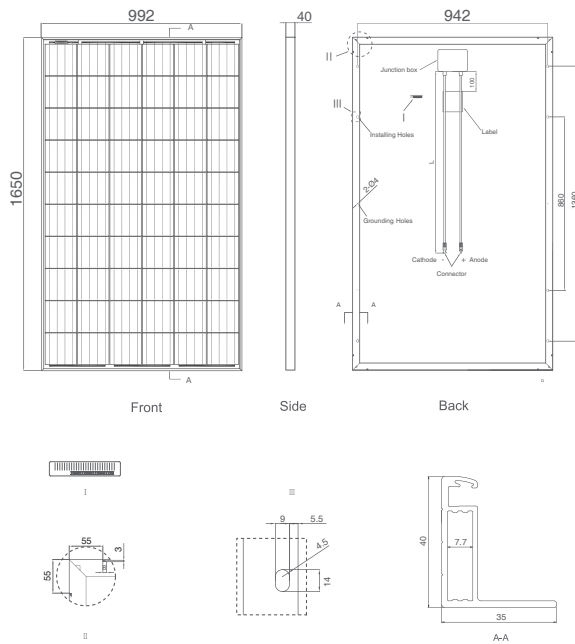
High salt mist and ammonia resistance certified by TUV NORD.

LINEAR PERFORMANCE WARRANTY

10 Year Product Warranty • 25 Year Linear Power Warranty



Engineering Drawings

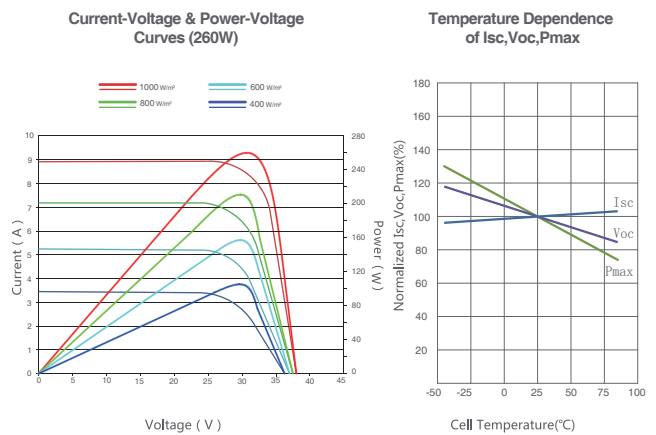


Packaging Configuration

(Two boxes=One pallet)

25pcs/ box, 50pcs/pallet, 700 pcs/40'HQ Container

Electrical Performance & Temperature Dependence



Mechanical Characteristics

Cell Type	Poly-crystalline 156×156mm (6 inch)
No. of cells	60 (6×10)
Dimensions	1650×992×40mm (65.00×39.05×1.57 inch)
Weight	19.0 kg (41.9 lbs)
Front Glass	3.2mm, High Transmission, Low Iron, Tempered Glass
Frame	Anodized Aluminium Alloy
Junction Box	IP67 Rated
Output Cables	TÜV 1×4.0mm ² , Length: 900mm or Customized Length

SPECIFICATIONS

Module Type	JKM255P		JKM260P		JKM265P		JKM270P	
	STC	NOCT	STC	NOCT	STC	NOCT	STC	NOCT
Maximum Power (Pmax)	255Wp	189 Wp	260Wp	193Wp	265Wp	197Wp	270Wp	200Wp
Maximum Power Voltage (Vmp)	30.8V	28.5V	31.1V	28.7V	31.4V	29.0V	31.7V	29.4V
Maximum Power Current (Imp)	8.28A	6.63A	8.37A	6.71A	8.44A	6.78A	8.52A	6.80A
Open-circuit Voltage (Voc)	38.0V	35.2V	38.1V	35.2V	38.6V	35.3V	38.8V	35.4V
Short-circuit Current (Isc)	8.92A	7.26A	8.98A	7.31A	9.03A	7.36A	9.09A	7.38A
Module Efficiency STC (%)	15.57%		15.88%		16.19%		16.50%	
Operating Temperature(°C)	-40°C~+85°C							
Maximum system voltage	1000VDC (IEC)							
Maximum series fuse rating	15A							
Power tolerance	0~+3%							
Temperature coefficients of Pmax	-0.41%/°C							
Temperature coefficients of Voc	-0.31%/°C							
Temperature coefficients of Isc	0.06%/°C							
Nominal operating cell temperature (NOCT)	45±2°C							

STC: Irradiance 1000W/m² Cell Temperature 25°C AM=1.5

NOCT: Irradiance 800W/m² Ambient Temperature 20°C AM=1.5 Wind Speed 1m/s

* Power measurement tolerance: ± 3%